



"METSO" HP100 / HP200 / HP300
BÜTÜN YEDEK PARÇALARI STOKLARIMIZDA...



"N55208134"



"7090228208_0" HP300



"7080200502"



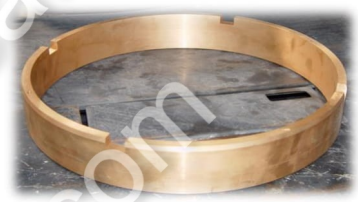
"N90228304_0" ECCENTRIC ASSEMBLY



"1022073307"



"7035800600" SOCKET LINER



7015656200



"1022145975" Lower Head Bushing



"1022063300"



"1048514410" FRAME SEAT LINER



"1093030108_0"

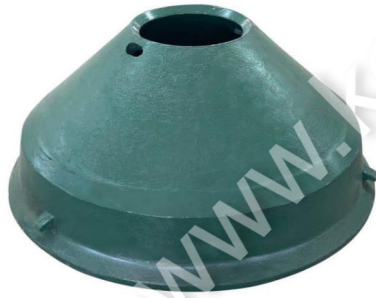


"1094280065_3"



"7013308252" MAIN SHAFT





"N55308261" MANTLE



"N55208134" BOWL LINER



"N08010111" BACKING EPOXY



"7021900301"



"7065558093"



"1063914652"



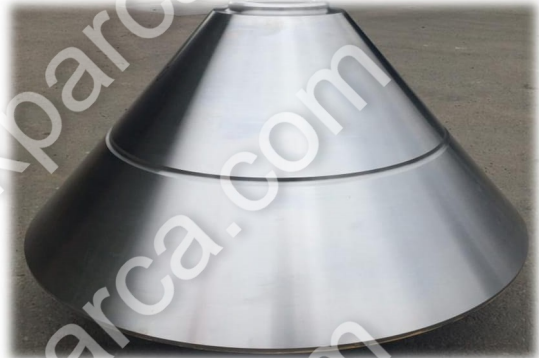
"1038018155"



"7041068005" LOCKING BOLT



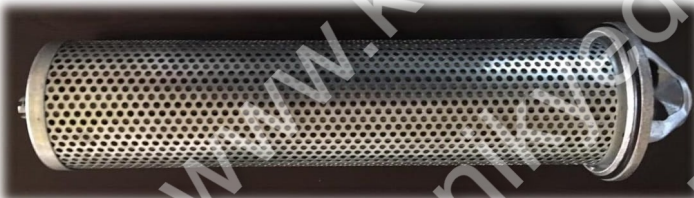
"7039608251" SOCKET



"7082404300" HEAD CENTER



"1063518815" -U- SEAL

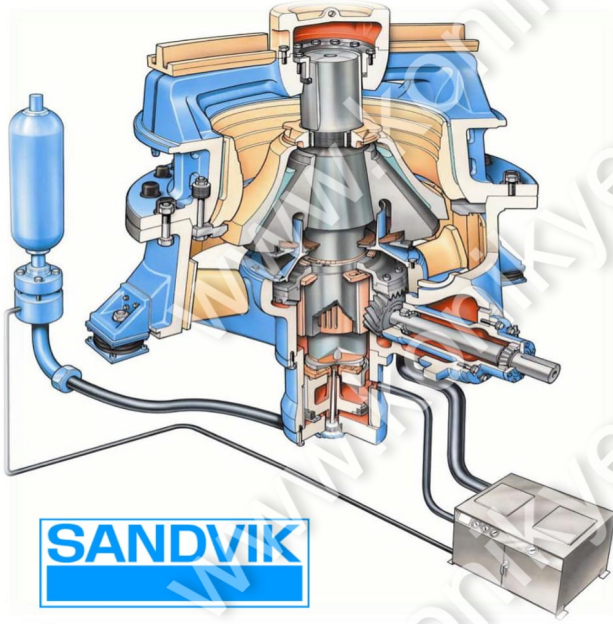


"7002445751" FILTER CARTRIDGE



"N02150061_1" CASAPPA PUMP





"SANDVIK" CH430 / CH440 / CH660
BÜTÜN YEDEK PARÇALARI STOKLARIMIZDA...



"442.7225-01" Mantle A {M1} "442.8422-01" Concave {EC}

SANDVIK



"442.7102-01" Dust Seal Ring



"442.7093-00" Gear & Pinion

SVEDALA



"442.9408-01" Spider Bushing



"442.7093-02" Pinion



"442.7117-01" Shaft Sleeve



"442.8333-01" Inner Head Nut



"442.7107-01" Eccentric Wearing Plate



"442.7105-00" Head Nut



"442.7146-01" Bottom Shell Bushing



"442.9406-01" EC Bushing



"442.7492-01" Spider Cap



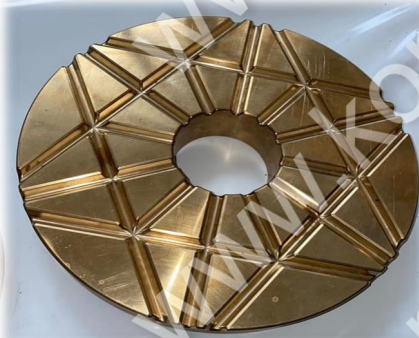
"442.7110-01"



"442.7193-01" Oil Seal Ring



"442.7140-00" Liner of Narrow ARM



"442.7120-01" Main Shaft Step



"442.7106-01" Dust Collar



"442.9672-00" Piston



"442.7121-01" Step Washer



"442.7112-00" Hydroset Packing



"442.7122-01" Piston Wearing Plate



Olcay Tuncay Demirci



+90 530 143 90 03



+90 312 815 54 06



TKL3000SE@gmail.com



www.konikyedekparca.com